
CT Balance of State
(CT BOS)
Continuum of Care
(CoC)
Steering Committee
Meeting



December 18, 2020

Moment of Silence



Agenda

- Welcome
- Announcements
- 2020 Planning Grant Allocation & New Needs
- Attendance/Voting
- Reallocation Discussion
- CCEH Updates
- PSH Prioritization Criteria
- Steering Committee & COVID Meeting Schedule
- Consumer Leadership Involvement Project (CLIP) Focus Group



Announcements



CoC Monitoring & Participant Chart Guidance Webinar



January 7th – 10am-11:30am

[Link to join webinar](#)

Meeting ID: 810 2390 3395

Passcode: 960702

646-876-9923

HOME CONNECTICUT



- HOMEConnecticut campaign for affordable housing in CT & Partnership for Strong Communities (PSC) would like feedback from advocates, tenants, concerned citizens, and those who work in housing.
- **PSC wants to hear from you:**
 - What are the most important affordable housing issues in your work and/or community?
 - What's working and could use more support or funding? Where are there gaps in advocacy and action?
 - How can HOMEConnecticut best serve the needs of Connecticut residents and communities?

HOME CONNECTICUT (2)



- **Take PSC 5-minute survey on the future of affordable housing in Connecticut.**
- This survey is available in English and Spanish.
- For more information about our HOMEConnecticut campaign, [click here.](#)

Goodwin University – Opportunities for Housing

- Available units for families experiencing homelessness who want to enroll at Goodwin University in East Hartford
- RRH can support rent. Must go thru CANs. Have 1 HH enrolled!
- Help spread the word!
- For more information contact:

Kara.Zichichi@ct.gov



Discussion of 2020 Planning Grant Allocation & New Needs



Proposed Ideas:

- Racial Equity Implementation
- Improving Outreach data processes
- Web-based Training Platform
- RRH Case Conferencing

Other Suggestions?

All agencies that receive Planning Grant funds are required to complete the budget template: [Planning Budget Template](#)

Eligible Activities

- Coordination Activities
- Project Evaluation
- Project Monitoring Activities
- Participation in the Consolidated Plan
- CoC Application Activities
- Determining Geographical Area to be Served by the CoC
- Developing a CoC System (e.g. trainings, policy development)
- HUD Compliance Activities (e.g. HIC/PIT, System Performance Measures)

REMINDER - Attendance Policy Recording

For SC members to be recorded as present and eligible to vote either during the meeting or through subsequent electronic voting conducted on matters discussed during the meeting, they must do one of the following:

- a) Show their full name in the video conferencing application, or
- b) State at the beginning of the meeting when prompted that they are present



Who can vote?



Coordinated Access Networks (CANs) – 2 votes

- Greater Hartford
- Eastern
- Greater New Haven
- Central
- Middlesex/Meriden/Wallingford

Representatives from Not-for-Profit & Quasi-Public Agencies – 1 vote

- Partnership for Strong Communities
- CT Coalition to End Homelessness
- AIDS CT
- CT Coalition Against DV
- CT Housing Finance Agency
- Corporation for Supportive Housing

Representatives from Government Agencies – 1 vote per agency

- US Dept of Veterans Affairs
- CT Dept of Housing
- CT DMHAS
- CT Dept of Social Services
- CT Dept of Correction
- CT Dept of Education

Persons with Lived Experience (PWLE) – 1 vote per person

If any SC member has a Conflict of Interest (COI), they are required to recuse themselves

CT BOS Conflict of Interest (COI) Form – due 1/10/21

- Steering Committee members are required to complete the COI each year even if they do not have a known COI.
- Situation in which a person has competing commitments, obligations, duties or goals.
- Situations can result in real or perceived lack of independence or impartiality.
- Example - when a SC member, a member of his/her immediate family, or his/her business associate has an interest, financial or otherwise, whether as employee, owner, fiduciary, consultant, Board member, or supplier or recipient of goods or services, in any program or agency that receives Continuum of Care funds. [CT BOS Conflict of Interest Form](#)



Reallocation Process Discussion & Vote?

Options:

1. Steering Committee (SC) is made aware of the projects that are being proposed for reallocation and votes on whether to reallocate their funding.
2. Steering Committee makes the decision to reallocate the funding **WITHOUT** knowing the projects to be reallocated.
3. Steering Committee yields the reallocation decision to the SC Chairs.





CCEH Updates

Vote on 2021 Point-in-time Count of Homeless
Persons Methodology

[Proposed 2021 PIT Methodology](#)

PIT 2021 Methodology

December 18, 2020



Linda Casey
Director, HMIS &
Strategic Analysis

Agenda

1

**SHELTERED/UNSHELTERED
METHODOLOGY CHANGES**

2

**OUTREACH ENROLLMENT
OPTIONS**

3

QUESTIONS

Sheltered Count Changes

Change from 2020

- No methodology changes
- Clients staying in hotels
 1. Separate PIT database entry for hotels to record how many clients slept in hotel vs shelter
 - To be completed night of count (Tuesday, January 26, 2020)

Unsheltered Count Changes

Change from 2020

1. Rely on outreach teams, not volunteers
2. Not systematically sampling or weighting low probability areas
 - Known Clients = High Probability Areas in past years
 - Improving data collection options
 - HMIS and Non-HMIS users

HUD Approval



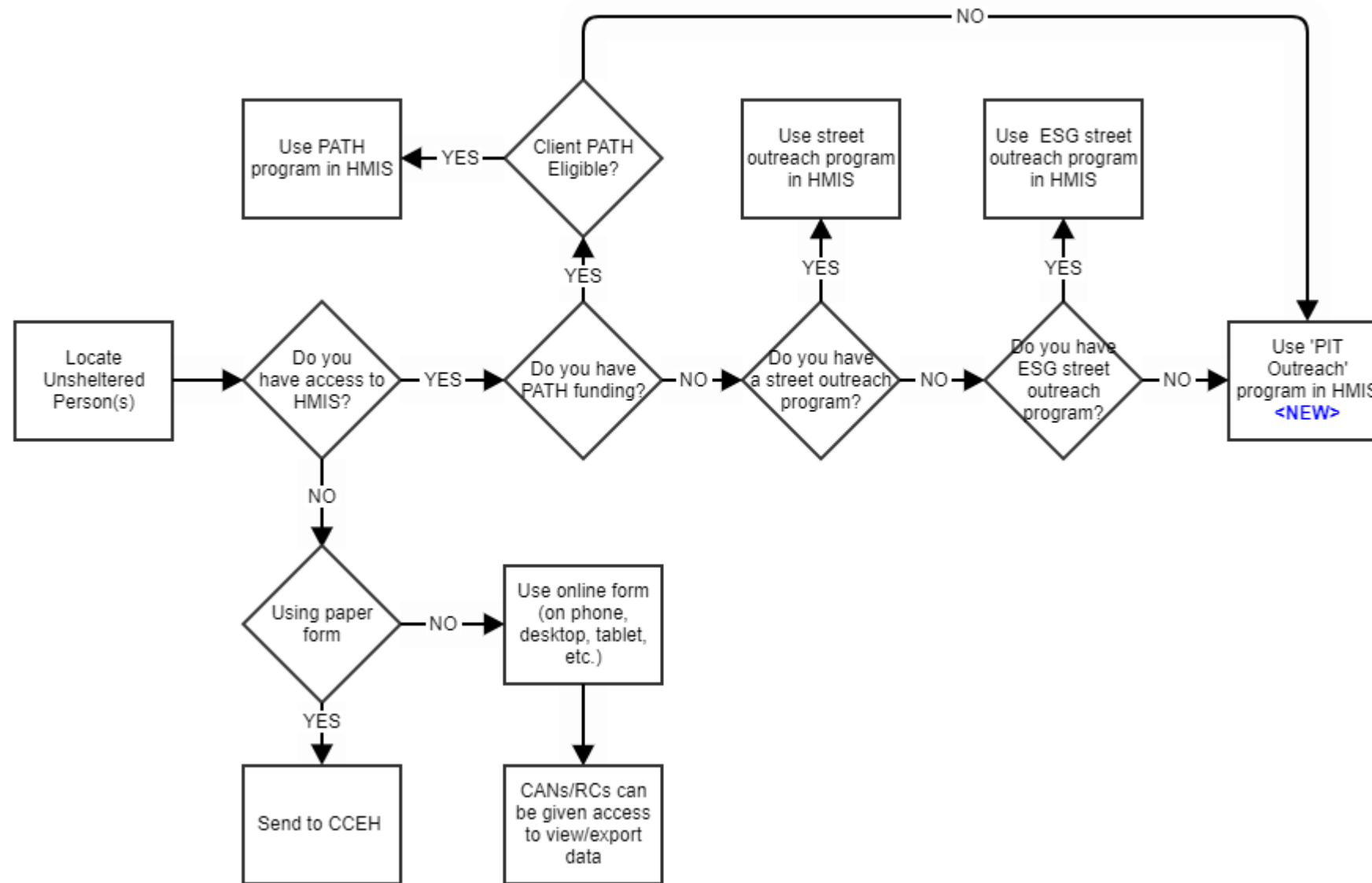
- No exceptions sought from HUD to conducting Unsheltered Count
- Requested approval from HUD on revised methodology
- HUD approved 12/15/20



How Will It Work?

- Use current PATH and street outreach programs
 - If you do not have one, use NEW PIT Outreach program
- Data collection option for those who do not have HMIS access (soup kitchens, municipalities, etc.)
 - Paper and mobile-ready online form
 - Captures demographic and characteristic data
- Coordinate outreach teams and RCs to link resources if someone found to be unsheltered

How Will It Work?



Timeline

JANUARY 26, 2021

Point-In-Time (PIT) Sheltered Count

DECEMBER 2020

Engage outreach staff; gather requirements; create new outreach program; create program and online form

**JANUARY 27-
FEBRUARY 10, 2021**

14-Day Validation Period

DECEMBER - JANUARY 2021

Provide training and roll-out new program and online form



Contact Info:

Linda Casey

lcasey@cceh.org

860.690.0123



PSH Prioritization – Revisions to CAN Policies

BOS converted all CoC funded Permanent Supportive Housing projects from being 100% dedicated to people experiencing chronic homelessness to using HUD's DedicatedPlus eligibility criteria in the 2019 CoC competition. CANs to start making DedicatedPlus referrals in Jan 2021.

[PSH Prioritization Proposed Revisions to CAN Policies](#)



Reminders from DedicatedPLUS Webinar

- Update your intake policy (required)
- [Sample Project Intake Policy](#)
- Use new homelessness verification form (required)
- [Homeless Verification Form](#)
- Use new sample letters, self-certification and due diligence templates (optional)
- [Sample letters](#)



CAN Policies – Revisions

Section V. Prioritization and Matching

Section E. Permanent Supportive Housing (PSH) Eligibility Review and Documentation

Following topics are addressed in this section:

- PSH Eligibility Criteria
- Other eligibility requirements as stipulated by funders
- Initial Eligibility Screening
- Final Eligibility Determination
- Eligibility Documentation



CAN Policies – Revisions

Section V. Prioritization and Matching (2)



Section F. Permanent Supportive Housing (PSH) Prioritization

Prioritization criteria follow already established principals – updated for DedicatedPLUS.

Policies include a single set of PSH prioritization criteria to be applied for both of the following target populations:

- Households that include an Adult 25 Years of Age or Older
- Households that include only People Under Age 25

Policies also include prioritization criteria for the following circumstance:

- PSH Prioritization Criteria for Eligible DedicatedPLUS Households
- PSH Prioritization Criteria for when there are **No** Eligible DedicatedPLUS Households

CAN Policies – Revisions

Section V. Prioritization and Matching (3)

Section G. Prioritization for PSH Under Special Circumstances

Following topics are addressed in this section:

- Prioritizing access for Emergency Transfers
- Supportive Housing Transfers



CAN Discretion



- **CANs do have discretion:**
 - ✓ Tenants **transferring from one PSH project to another PSH project are exempt from the order of priority.**
 - ✓ Transfers should be considered both within and across CANs to best serve needs of participants -must be approved by CAN(s)
 - ✓ CAN may opt to diverge from prioritization process except as noted below **due to the housing resource available and/or the needs** of individuals/families who are prioritized on the By Name List.
 - ✓ Exceptions should be rare.



CAN Discretion (2)

- **CANs do not have discretion:**
 - ✓ Regarding eligibility criteria/documentation - must follow the protocols
 - ✓ For CoC projects, CANs also may not admit an applicant who does not meet DedicatedPLUS criteria **unless there is no eligible DedicatedPLUS applicant** who wishes to live in the local CAN region where the vacancy exists.
 - ✓ In cases involving an emergency transfer, CANs are required to diverge from prioritization process and follow the emergency transfer policies [Emergency Transfer Plan](#)

Vote on CAN Policies

Please vote via Survey Monkey
no later than 1/8/21

[Survey Monkey Link](#)



CT BOS Meeting Schedule Steering Committee & COVID-19 Office Hours



SC Meeting Schedule for 2021

(3rd Friday of each month)

- January 15, 2021; 11-12:30;
 - Semi-annual meeting
- February 19, 2021; 11-12
- March 19, 2021; 11-12
- April 16, 2021; 11-12
- May 21, 2021; 11-12
- June 18, 2021; 11-12

COVID Office Hours: 1/8/21

11:30-12:30 - *Addressing Testing
and Vaccine Hesitancy*

Zoom Info for all upcoming meetings

Meeting Link:

[Click here](#)

Meeting ID: 956 4487 8479

Password: 414595

Call-in number: 646-876-9923

CT BOS Team (Housing Innovations)



CT BOS CoC

ctboscoc@gmail.com

Suzanne Wagner

swagner@housinginnovations.us

Lauren Pareti

lpareti@housinginnovations.us

Shannon Quinn-Sheeran

shannon@housinginnovations.us

Myles Wensek

mylesw@housinginnovations.us

Liz Isaacs

lisaacs@housinginnovations.us

Consumer Leadership Involvement Project (CLIP)

FOCUS GROUP DISCUSSION