



2026 Renewal Evaluation Street Outreach

CT Balance of State (CTBOS) Continuum of Care

March 16, 2026

Liz Isaacs, Myles Wensek & Shannon Quinn-Sheeran,
Housing Innovations

Agenda

- Welcome and Introductions
- Background on Renewal Evaluation
- 2026 Renewal Evaluation Criteria
- Process & Schedule
- Questions
- Resources

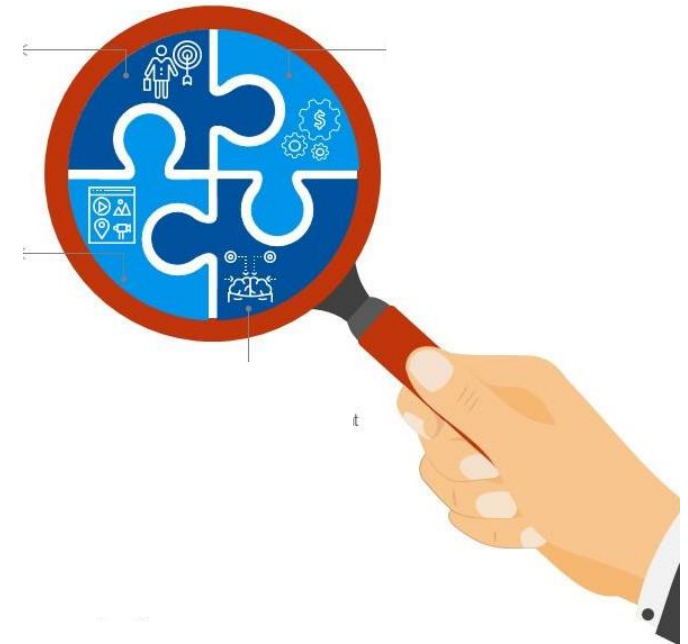




Background

Key Facts

- Over 110 Projects funded by CT BOS
- There are five CoC Street Outreach programs covering six CANs
- HUD requires CoCs to evaluate projects & scores whether CoCs evaluate certain things
- Uses HMIS data also used for Annual/Quarterly Performance Reports (Q/APRs) and System Performance Measures (SPMs)
- Outreach projects have not been integrated into RED (the Renewal Evaluation Database).



Why do we evaluate renewal projects?

Performance data used:

- By HUD to evaluate system performance, which impacts CoC application score
- By CT BOS to:
 - rank projects in the annual CoC Competition (required by HUD)
 - inform which projects continue to be funded
- Continuous Quality Improvement
 - Provides agencies with information on outcomes
 - Provides Steering Committee with information about system-wide needs



Better CoC performance = fully fund renewals & more funds for new projects.

HMIS Data



- Majority of items scored are from HMIS data
- Reporting period: **10/1/24-9/30/25** (most measures)
 - Corresponds with System Performance Measure period
- HI pulls HMIS data to produce Renewal Evaluation reports.
- If data are incorrect in your report, they must be corrected in HMIS

Projects Being Evaluated in 2026

- Only projects listed in this doc will be evaluated this year: [List of Renewal Evaluation Projects 2026](#)
- Agencies should have confirmed that the HMIS IDs are correct for all projects
- If your project has multiple HMIS IDs, please be sure that each ID is correctly listed

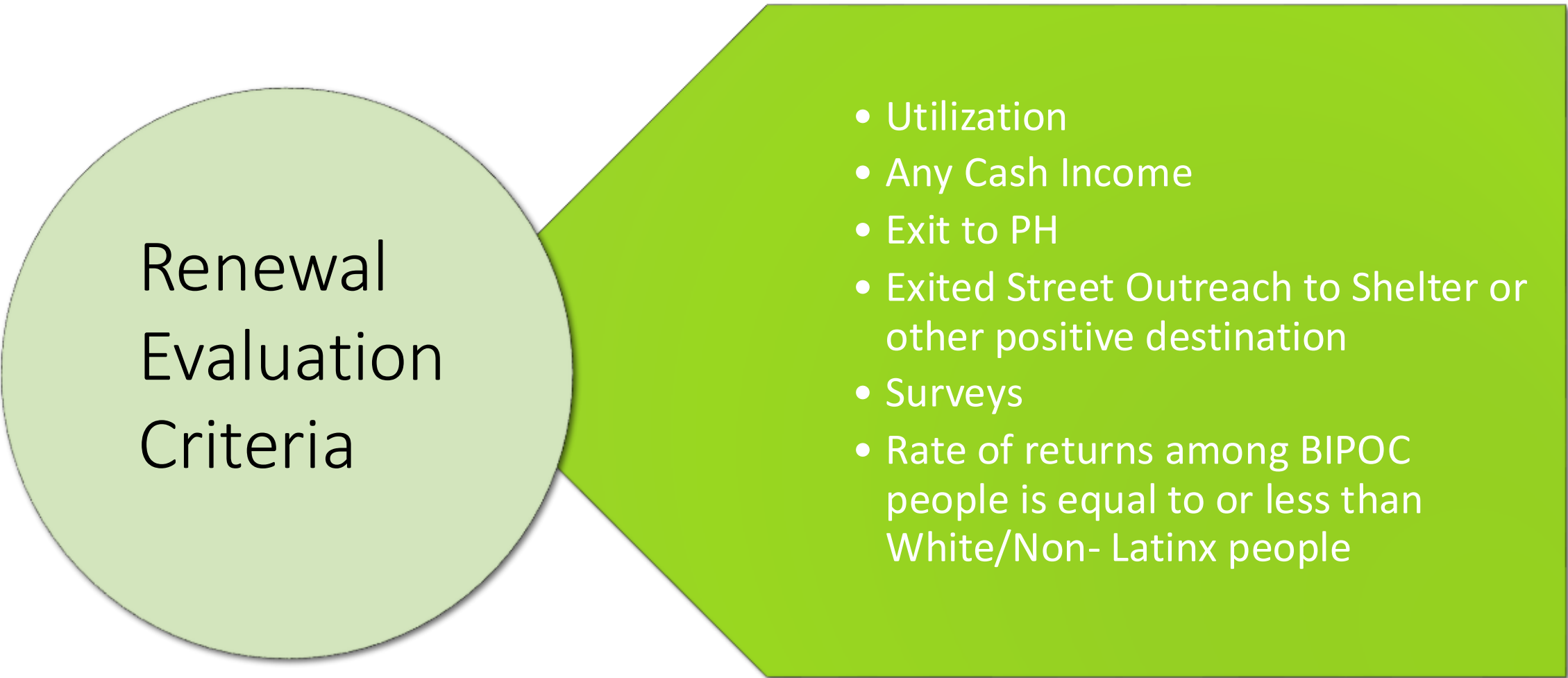


Renewal Evaluation Report Distribution



Reports distributed on 3/13/26 via e-mail

Distributed to Project Leads & Zengine contacts



Renewal Evaluation Criteria

- Utilization
- Any Cash Income
- Exit to PH
- Exited Street Outreach to Shelter or other positive destination
- Surveys
- Rate of returns among BIPOC people is equal to or less than White/Non- Latinx people

[2026 Renewal Evaluation Street Outreach Criteria & 2026 Renewal Evaluation Street Outreach Instructions](#)



Use RED to Submit
Score Change
Requests using
[Support Page](#)



Avoiding Common Pitfalls

Common Pitfalls



- Missing annual/exit assessments
- Incomplete HMIS data
Incorrect # of program participants
 - People not entered and/or exited as needed



Performance



Utilization

- 90% UTILIZATION BASED ON QUARTERLY UTILIZATION



Exit to Permanent Housing

- Benchmark to be determined
- Excluded from scored set:
 - Deceased participants
 - Hospital
 - Other residential non-psychiatric medical facility

Any Cash Income

*Benchmark to be
determined





Exited Street
Outreach to Shelter
or other positive
destination

*Benchmark to be
determined



Rate of Return to Homelessness Among Latinx, Black, Asian, Native, Multiple Race Groups as compared to White/Non-Latinx group

RATE OF RETURNS AMONG BIPOC PEOPLE IS EQUAL TO OR LESS THAN WHITE/NON-LATINX PEOPLE



Consumer Surveys

Participant Surveys – Scoring Criteria

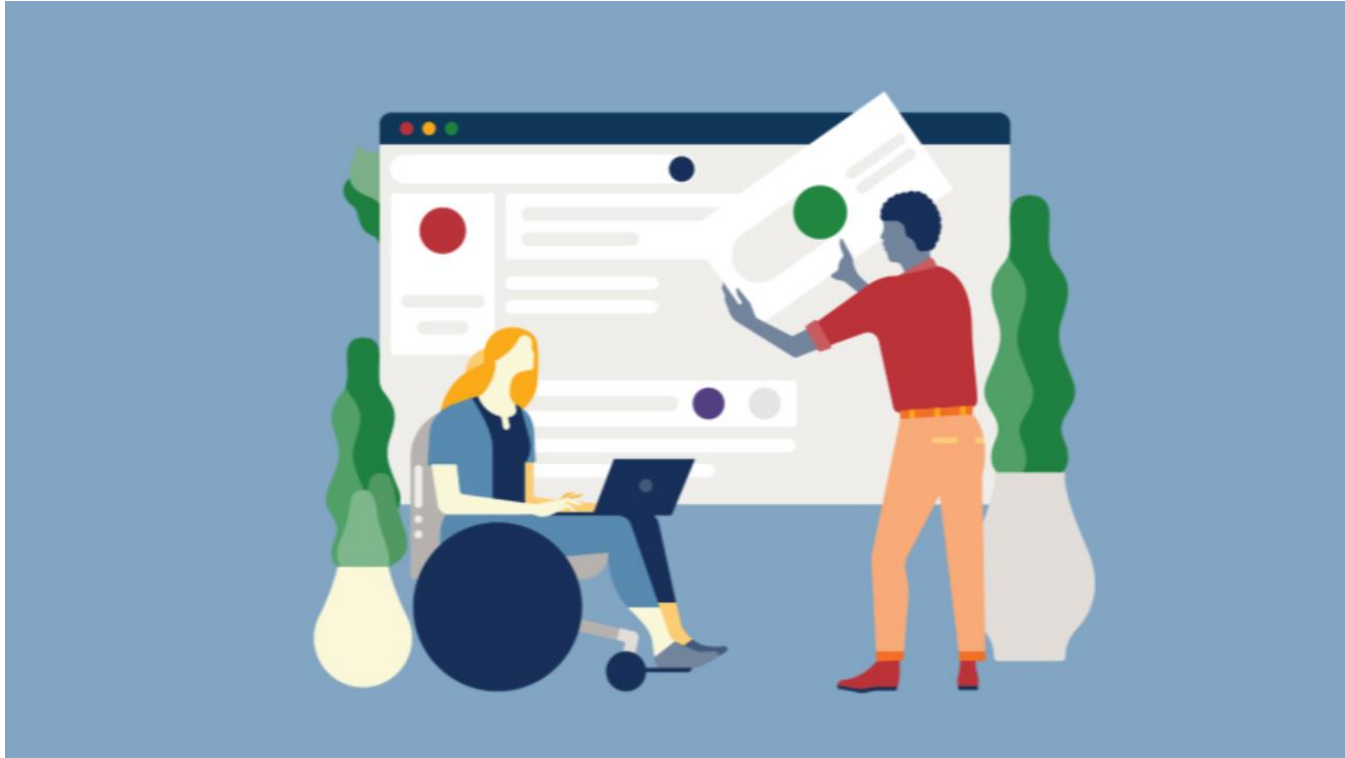
- DMHAS Surveys were due by 6/30/25
 - ✓ now aligned with DMHAS' survey deadline
- Maximum points available at a 35% response rate.
- Projects that did not submit surveys get 0 points for response rate.
- Projects received a 5-point penalty if surveys were late or not received.





Lateness & Contact Penalties

- 5 points deducted for late consumer survey submissions (not relevant for this year as projects are not being scored)



Process and Schedule

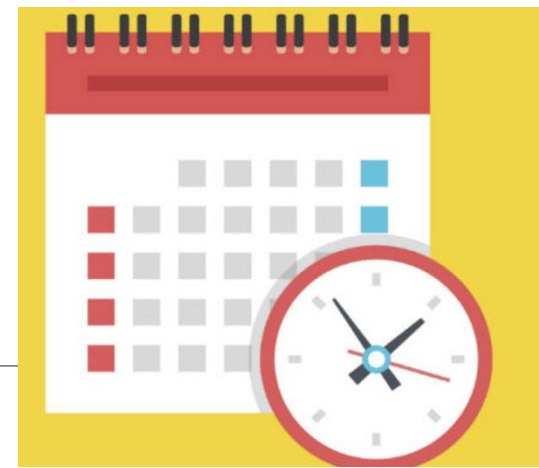
Zengine: Grants Management Database

- Providers must enroll in Zengine & keep contact information up to date.
- Ensures inclusion in CT BOS email list and distribution of evaluation reports to correct contacts.
- Zengine training: instructions on how to create and/or update contact information
 - Primary contact change – Contact Shannon



UPDATE YOUR CONTACTS!!!!

Renewal Evaluation Schedule



March

- Renewal Evaluation Webinar today (3/16)
- Deadline to submit RED [support](#) requests: 3/23
- 3/30: Final deadline to:
 - Submit score Change requests in RED
 - use the [Support Page](#) in RED (you do not need to log into your RED account to use the Support Page).
 - Go to “topics/subjects” at the bottom of the page and select, “I have a question about my score or believe it is wrong” from the drop-down menu.
 - Please complete the explanation and contact information and hit submit.

April - Change Request results available

Support Request Process

- Providers must submit a Support Request in RED. Don't submit via email.
- Support requests will be used to alert HI/Nutmeg to issues.
- For help with HMIS data cleanup, use [CoC Renewal Evaluation Data Clean-up Link](#)





Questions?

Resources



[BOS Renewal Evaluation Page](#)

- Instructions
- 2026 RE Criteria

[Street Outreach Resources](#)

- Street Outreach Participant Survey
- Policies, Monitoring Info, Trainings and More!

CT BOS Team (Housing Innovations)



CT BOS CoC

ctboscoc@gmail.com

Suzanne Wagner

swagner@housinginnovations.us

Lauren Pareti

lpareti@housinginnovations.us

Sara Zuiderveen

saraz@housinginnovations.us

Shannon Quinn-Sheeran

shannon@housinginnovations.us

Myles Wensek

mylesw@housinginnovations.us

Liz Isaacs

lisaacs@housinginnovations.us